



JACARANDA
HEALTH

QUARTERLY IMPACT REPORT

OCTOBER-DECEMBER 2021



jacarandahealth.org
[@jacarandahealth](https://twitter.com/jacarandahealth)

Get in touch:
hello@jacarandahealth.org

SUMMARY OF THE QUARTER

Q4



EXPANDING OUR FOOTPRINT TO MEET A GROWING DEMAND

This quarter has seen growing uptake of our solutions. Almost a million mothers across Kenya are now receiving lifesaving information and referral through our digital health tool PROMPTS, and over 6,300 health providers are equipped with basic and emergency care skills through our innovative mentorship model to serve mothers when they reach care.

We are improving provider skills through the dedicated group of public sector nurse midwives who have trained to be EmONC mentors. In this report you'll read about one of our mentors in Makueni County, Loise, who has - since the program was introduced - seen an uptick in patient numbers in her referral hospital, and a greater confidence and competence among the forty providers she has already trained.

We are also seeing growing buy-in from county governments, with five new county partnerships forged during this quarter alone, bringing us to a total of 20. As these partnerships grow, we are building strategic partnerships to support improved health service delivery for maternal and newborn health care. This quarter, we preview a partnership in Kakamega County, where we're working with the county government to reimagine how maternal health services are delivered, ensuring all women deliver in advanced facilities offering definitive care for emergencies. As part of this service delivery redesign, we are working with Rescue, a emergency dispatch service in Kenya, to ensure that no mum with urgent and emergency care needs is left behind.

We hope you enjoy reading.

20

partnerships forged with
county governments across
Kenya

930+

facilities across Kenya where we
are deploying our package of
solutions

QUARTERLY IMPACT



Empowering mums with the right information to seek timely care...

950K

mums receiving lifesaving information through PROMPTS

130,000

mums enrolled to PROMPTS **this quarter**



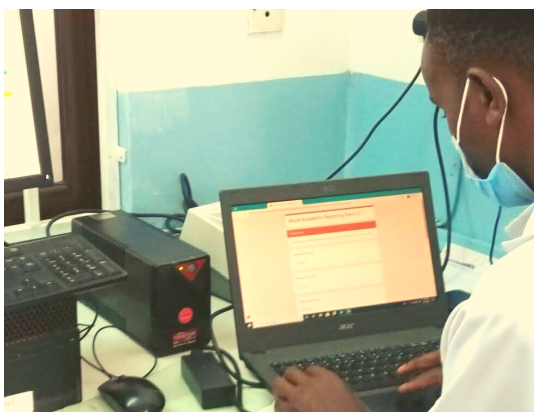
Ensuring nurses are equipped to support them when they get there...

45

counties (out of 47) represented among our 1,300+ active DELTA learners

6,300

frontline providers trained with through EmONC mentorship model



Addressing health system bottlenecks affecting mums and babies...

1,350

babies identified as having missed one or more vaccinations

100+

requests for blood made through our tracking tool.

LOISE'S STORY

Ensuring every mother receives respectful, quality care in Makueni



[READ THE FULL STORY](#)

Loise Nzilani Muthami thrives when busy. As Head Nurse at Makueni County Referral Hospital she strikes a balance between hospital oversight and nurse management, and practice - assisting maternity nurses on her ward with deliveries.

Over the last decade, Loise has seen concerted efforts to strengthen maternal and newborn care across the county. Nine years ago, Makueni had only three facilities providing emergency obstetric and newborn care (EmONC). Now, the county has 14. But there's still more to do.

Loise was among the first nurses to be trained through Jacaranda's EmONC mentorship program. An initial baseline survey showed some significant gaps; the majority of maternity nurses had little-to-no training in emergency care, and a lack of monitoring meant these issues hadn't been identified, reflected in falling patient numbers.

Loise has started to see a ripple effect in the program's impact. 'As more mentors are trained,.

The program has massively impacted our approach to attending emergencies and preventing mortalities. Suddenly, there's a great deal more teamwork, and we've seen our clients returning again and again to receive quality care in the hospital'.

the number of competent nurses grows rapidly'. She explains that frequent mentorship encourages nurses not to be complacent about what they know, and is instrumental in routinely identifying skills gaps. She alone has mentored 40 providers, focusing first on clinical skills-building and then training them to be better problem-solvers and communicators. **'Once a nurse and midwife knows when to intervene, how to document, and to treat clients with respect, they're able to attend to most complications that arise.'**

Loise plans to continually refreshing her own skills, and that of her providers, to ensure all mums at her facility receive the quality care they deserve.

GETTING MUMS IN NEED TO CARE - FASTER

Building a sustainable model to ensure mums have access to high-quality, safe, and affordable emergency transport in Kakamega County

Across Kenya, decreases in maternal and newborn mortality are stagnating. Kakamega, one of Kenya's most populous counties, is no exception. Poor quality care and access to it are significant drivers; only 37% of the county's births occur in a facility equipped to handle maternal emergencies, and poor coordination of emergency transport is costing lives.

Under Kakamega County leadership, Jacaranda is leading a Service Delivery Redesign project which looks at reorganizing maternal care to ensure all women deliver in advanced facilities offering definitive care for complications.

In Kakamega, ~99% of all pregnant women live within 1 hour of an advanced facility, but there is a lack of safe, affordable emergency transport.

Jacaranda is partnering with Rescue, a dispatch service connecting available, qualified private sector transport with customers in need, to address bottlenecks preventing mums accessing emergency services.

This includes gaining better visibility of gaps through data and insights, improving the quality of pre-hospital emergency care via routine training, and ensuring these solutions are sustained by helping counties better coordinate and fund emergency services.

Strengthening emergency services for mums and babies is just one piece of the puzzle. Complete redesign means women receive quality care at every stage of the referral process - both on the way to hospital and when they reach there.

'For successful redesign, we need to interrogate gaps across the full spectrum of care referral and delivery - including delays in women reaching a facility - to help mums access a quality, affordable service when and where they need it.'

- Victor Bwire, Service Delivery Redesign Manager, Jacaranda Health

OUR APPROACH

We collect and share real-time data with county governments to help improve visibility on gaps, efficiently manage resources, and ensure innovations reach high-priority areas.

We routinely train frontline emergency responders in emergency care and medical taxi drivers with basic life support training, to ensure they're equipped to provide mums support en-route to hospital.

We ensure continued focus on advancing emergency services by co-designing solutions with counties, embedding them into health policy, and ensuring they're sustainably funded.



[READ MORE ON OUR WEBSITE](#)

EXPOSURE

Where we've been seen and heard...

This quarter, we've shared the insights, evidence, and learnings accrued through our programs and projects with global audiences within **10 podcasts, webinars, and conferences**. Here's our top picks for this quarter...

CLICK BELOW



LAUNCH OF THE EPMM

Nick Pearson speaks on accelerating progress towards Sustainable Development Goal 3.1 - reducing maternal mortality.



INNOVATING URBAN HEALTH

Jacaranda shares insights on tackling complex urban health challenges using implementation research in two informal settlements in Nairobi.



YOUR AID, EVOLVED

Dr. Sathy Rajasekharan discusses reinventing yourself on the journey to scale, and Jacaranda's path to global scale.



EQUITABLY ADVANCING DIGITAL HEALTH IN KENYA

Cynthia Kahumbura explores barriers and opportunities to make Kenya's digital health transformation inclusive.



INCLUSIVE TECHNOLOGIES TO EQUITABLY REACH MUMS

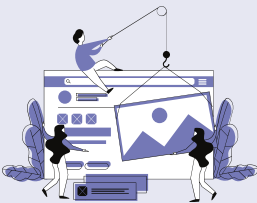
Sieglinder Zawadi shares how our digital health tool PROMPTS to reach the last mile of mums across Kenya.



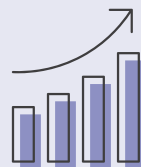
DIGITAL TOOLS TO EMPOWER ADOLESCENT MUMS

Through PROMPTS, we present an innovative approach to addressing the unique needs of urban adolescent mums.

FURTHER READING



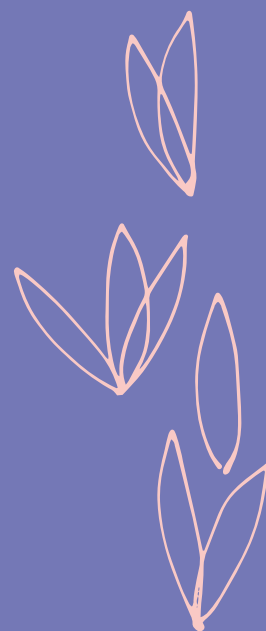
Learn more about our programs and approach on our [new website](#).



Learn how we've scaled and innovated our solutions in our [Annual Impact Report](#).



Stay in touch with our latest news and insights. [Sign up to our newsletter](#).



Contact

Jacaranda Health
Prime Office Suites
Kindaruma Road
Nairobi, Kenya

www.jacarandahealth.org 

hello@jacarandahealth.com 

[@jacarandakenya](https://www.facebook.com/jacarandakenya) 

JACARANDA HEALTH
Q4 QUARTERLY IMPACT REPORT